

# Comment repousse un foie ?

Karim Boudjema

Département de chirurgie Viscérale

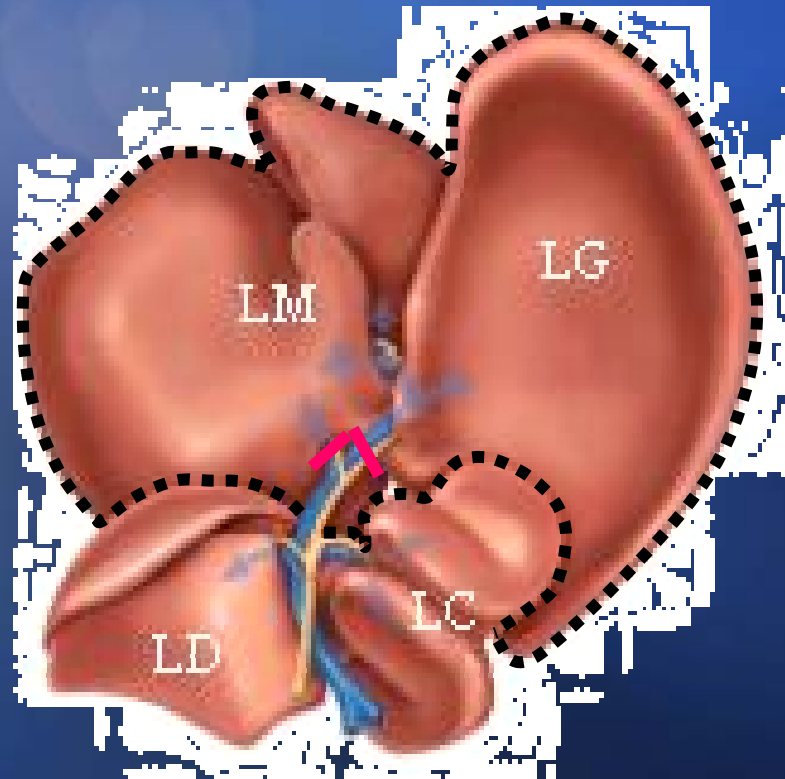
Hôpital Pontchaillou

Rennes

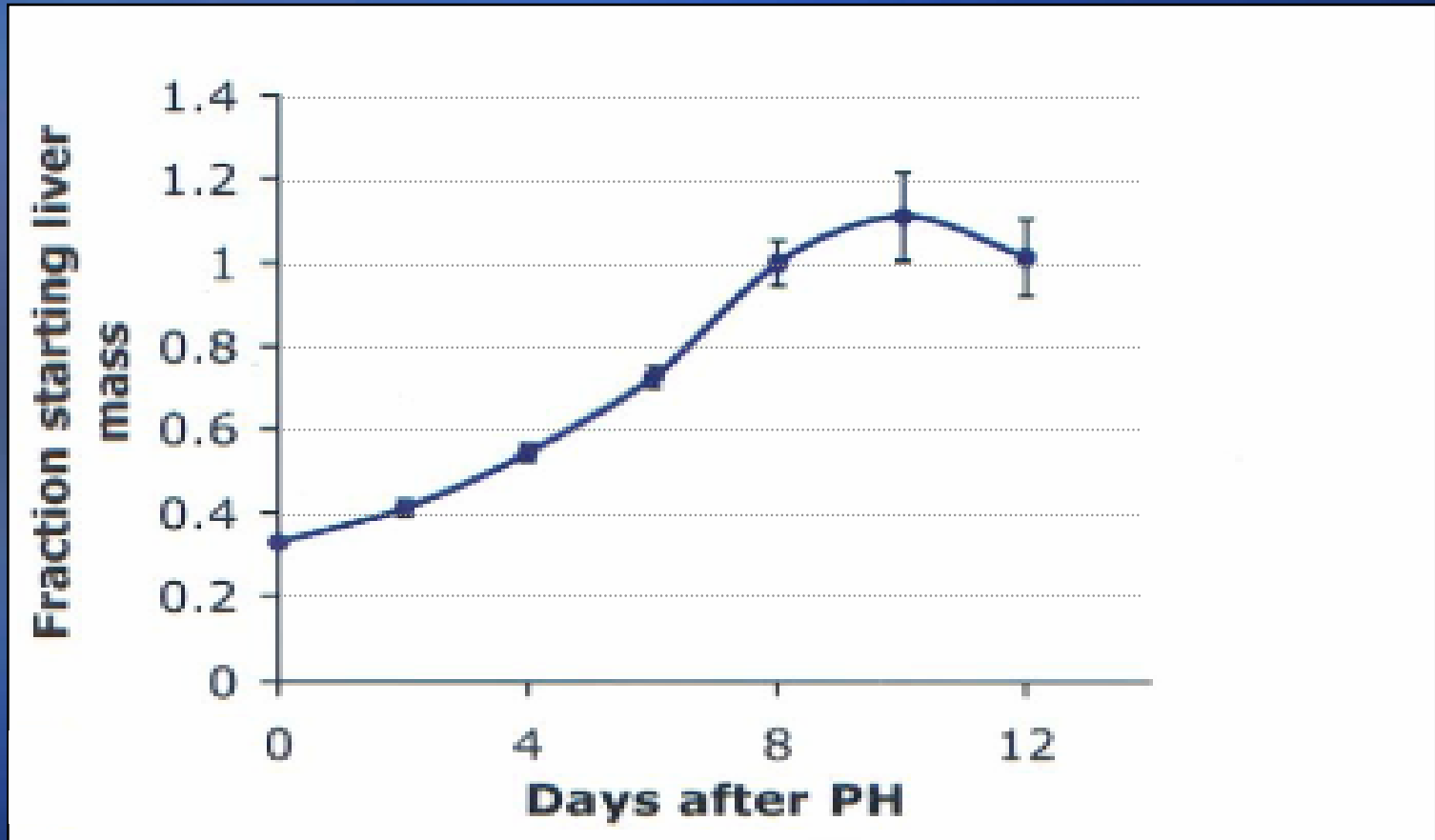
# Hypertrophie compensatrice



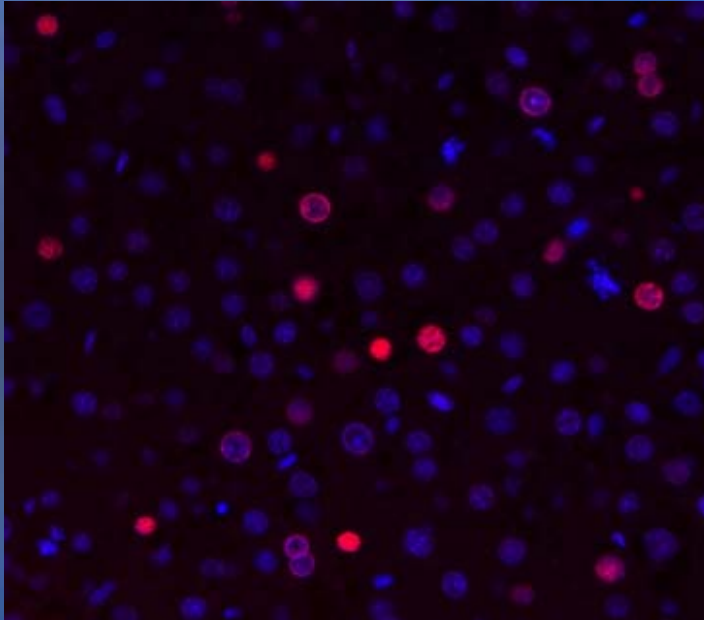
# Modèles d'études Hépatectomie des 2/3



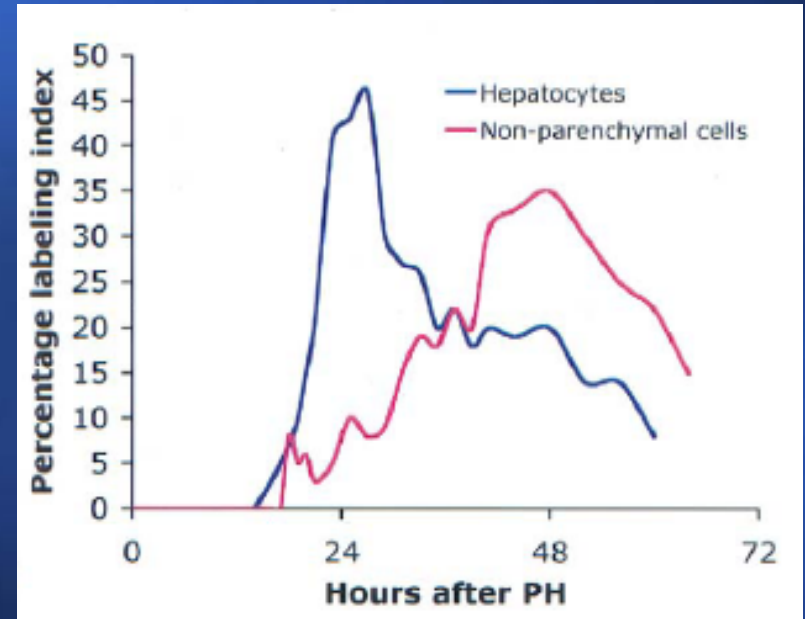
\* Higgins et Anderson. Archives of Pathology 1931



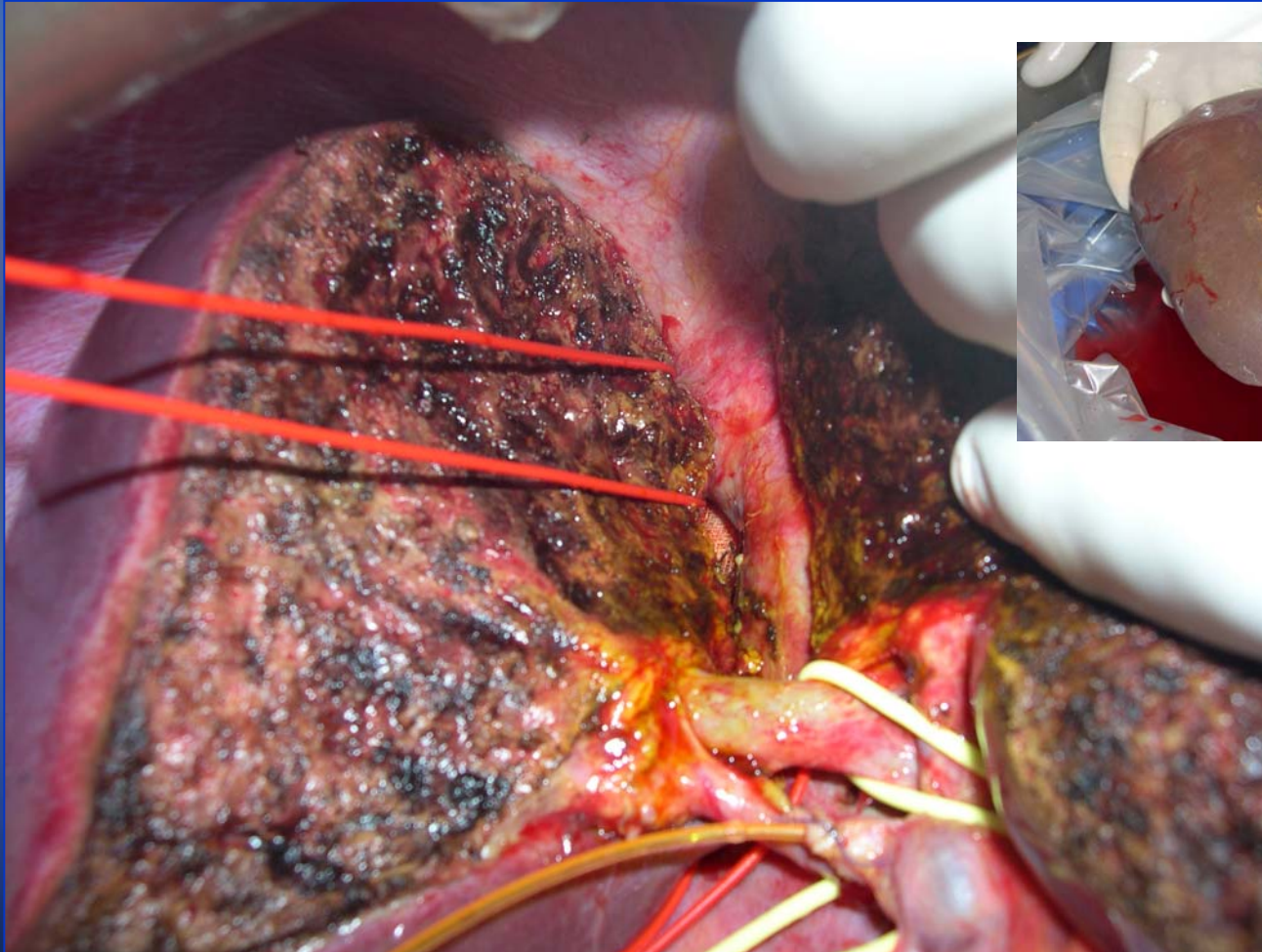
# BrDU



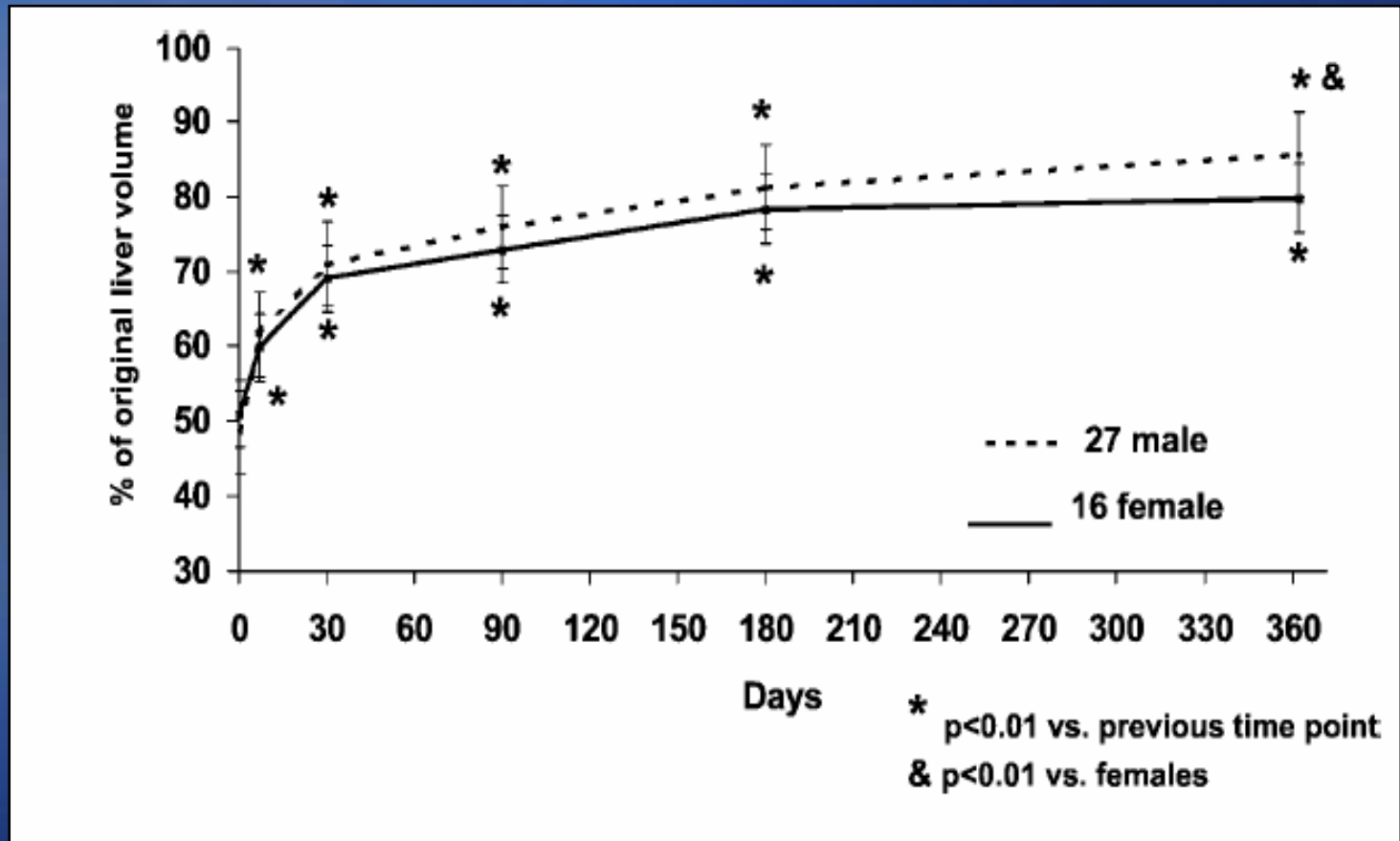
Marquage anti BrDU 18h après une hépatectomie des 2/3 chez le rat \*



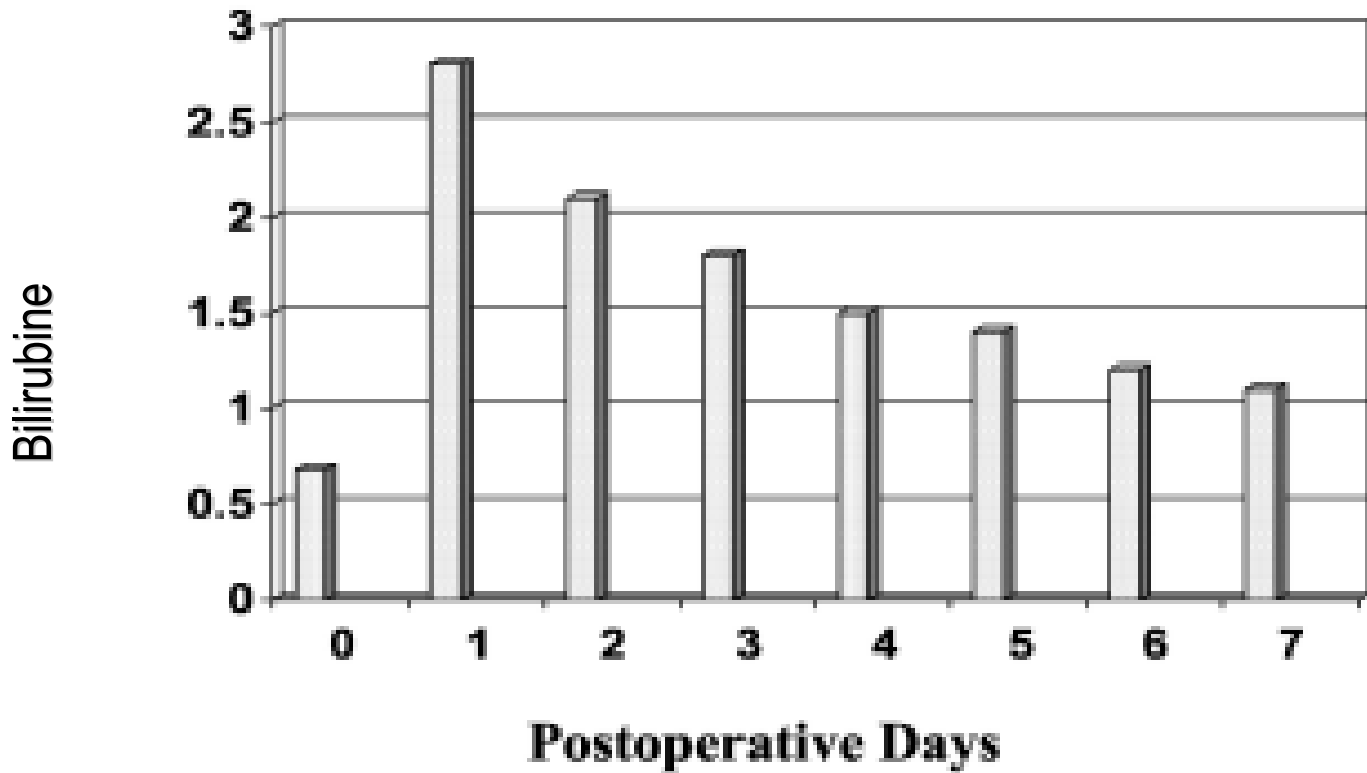
# Le modèle du donneur vivant



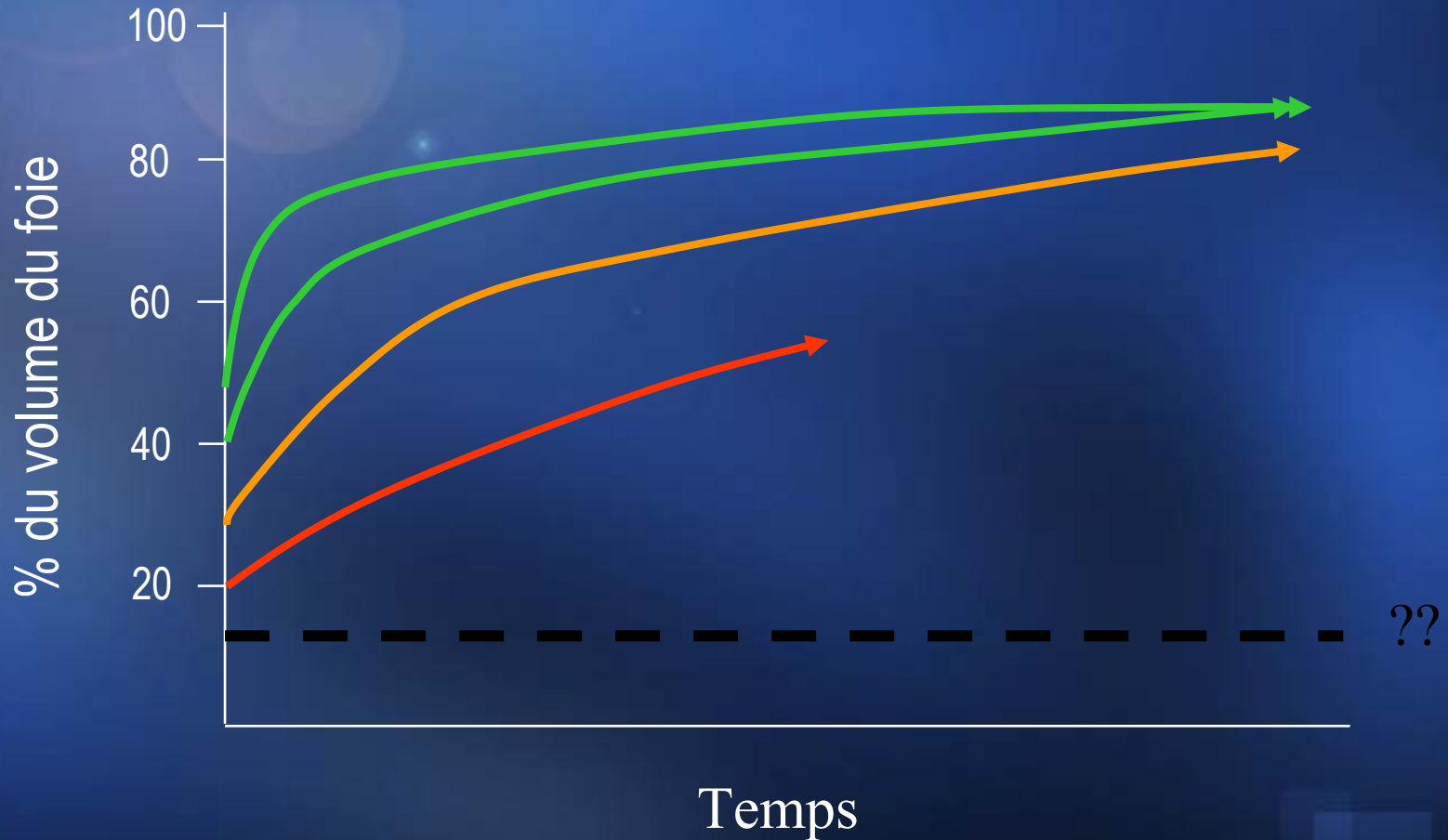
# Volume



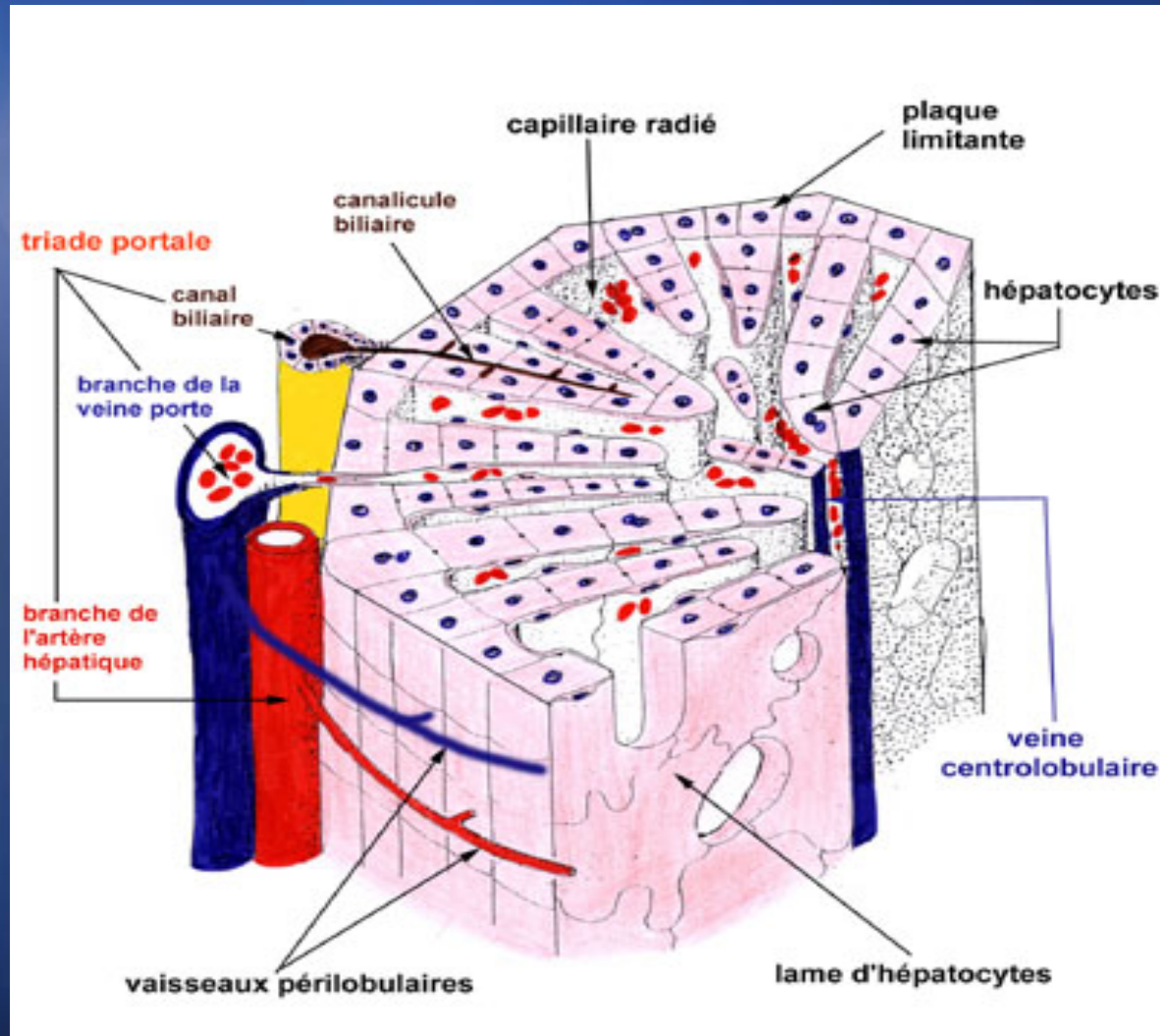
# Fonction



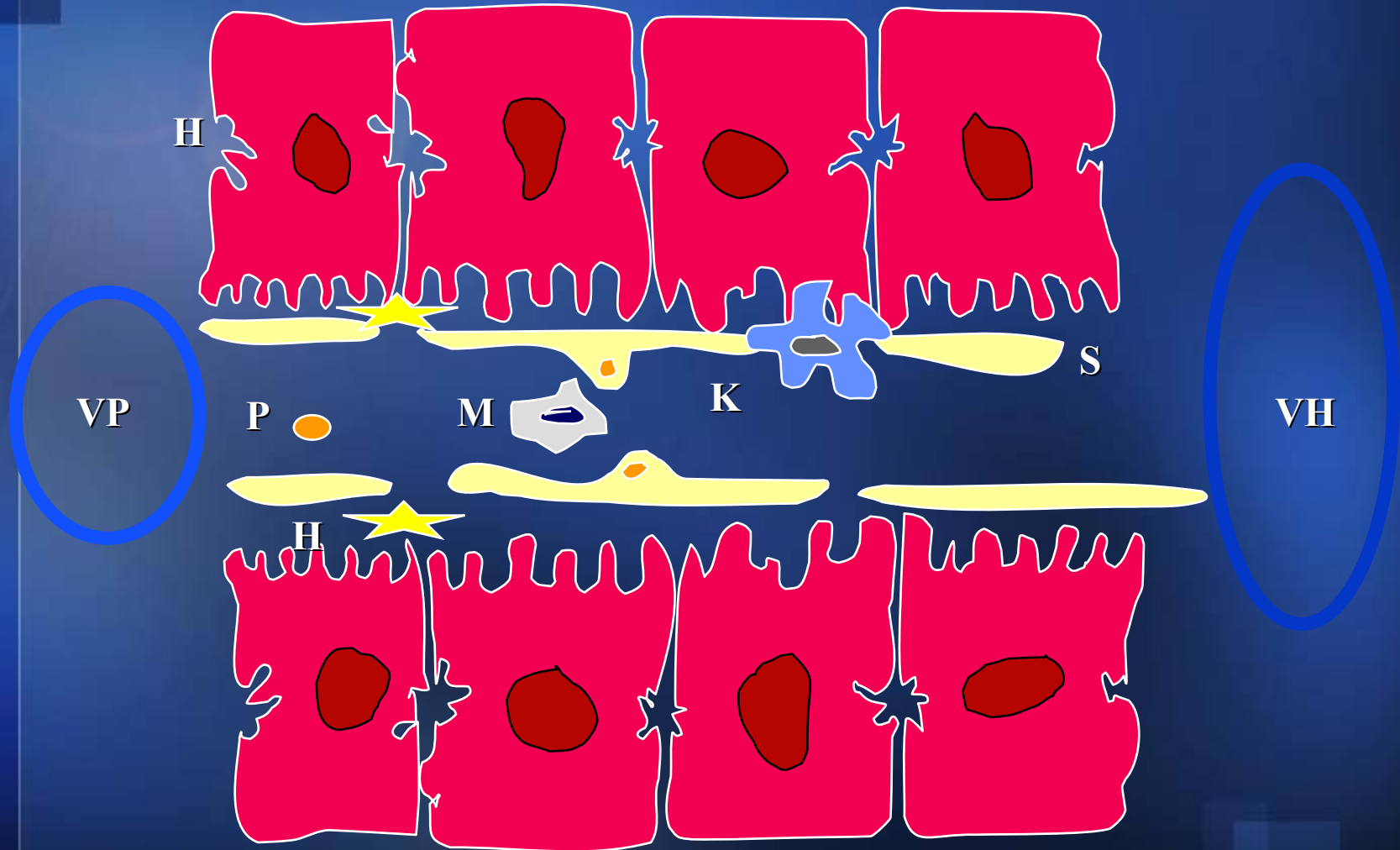
# Volume restant minimum ?



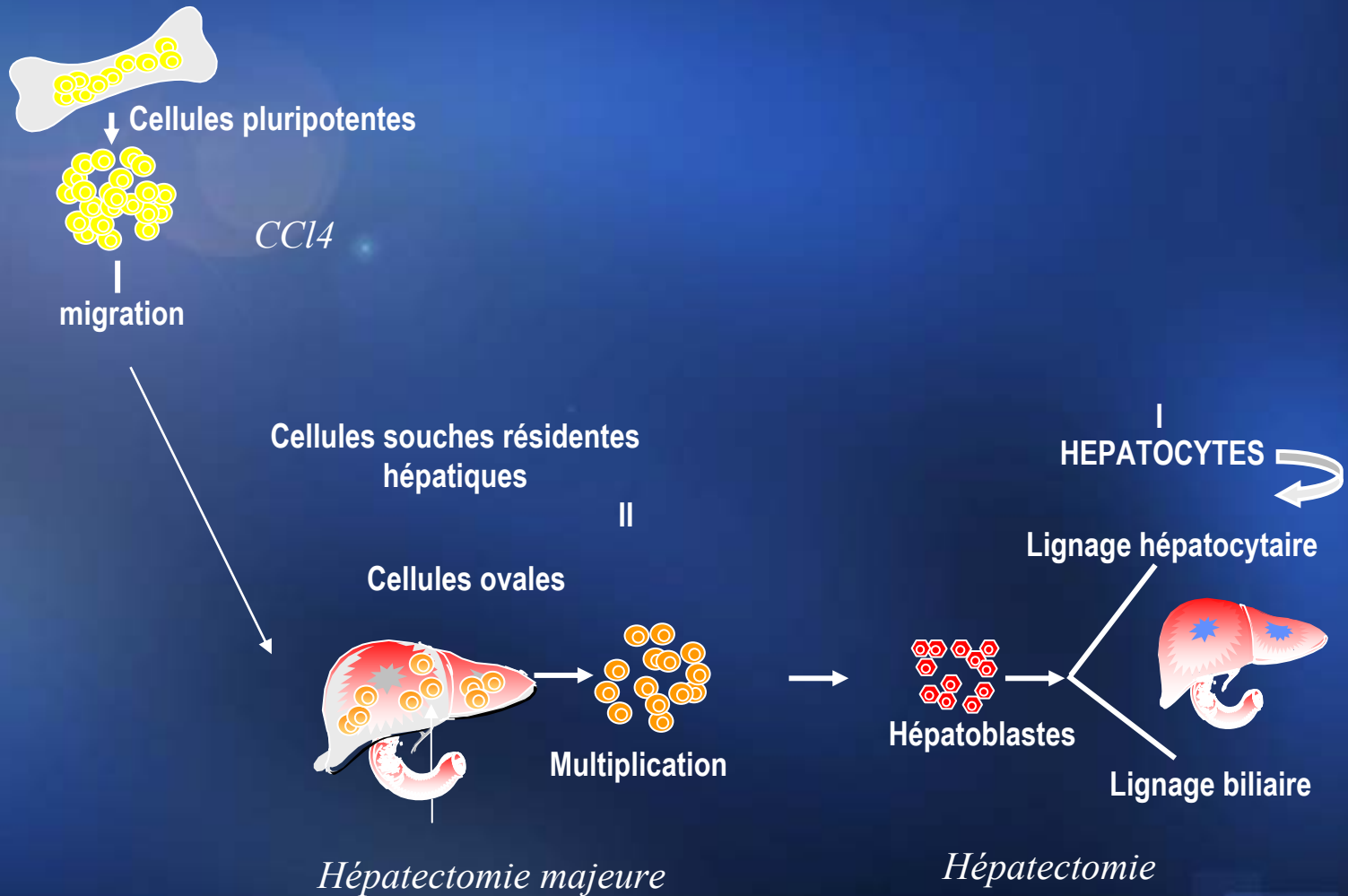
# Anatomie microscopique du foie



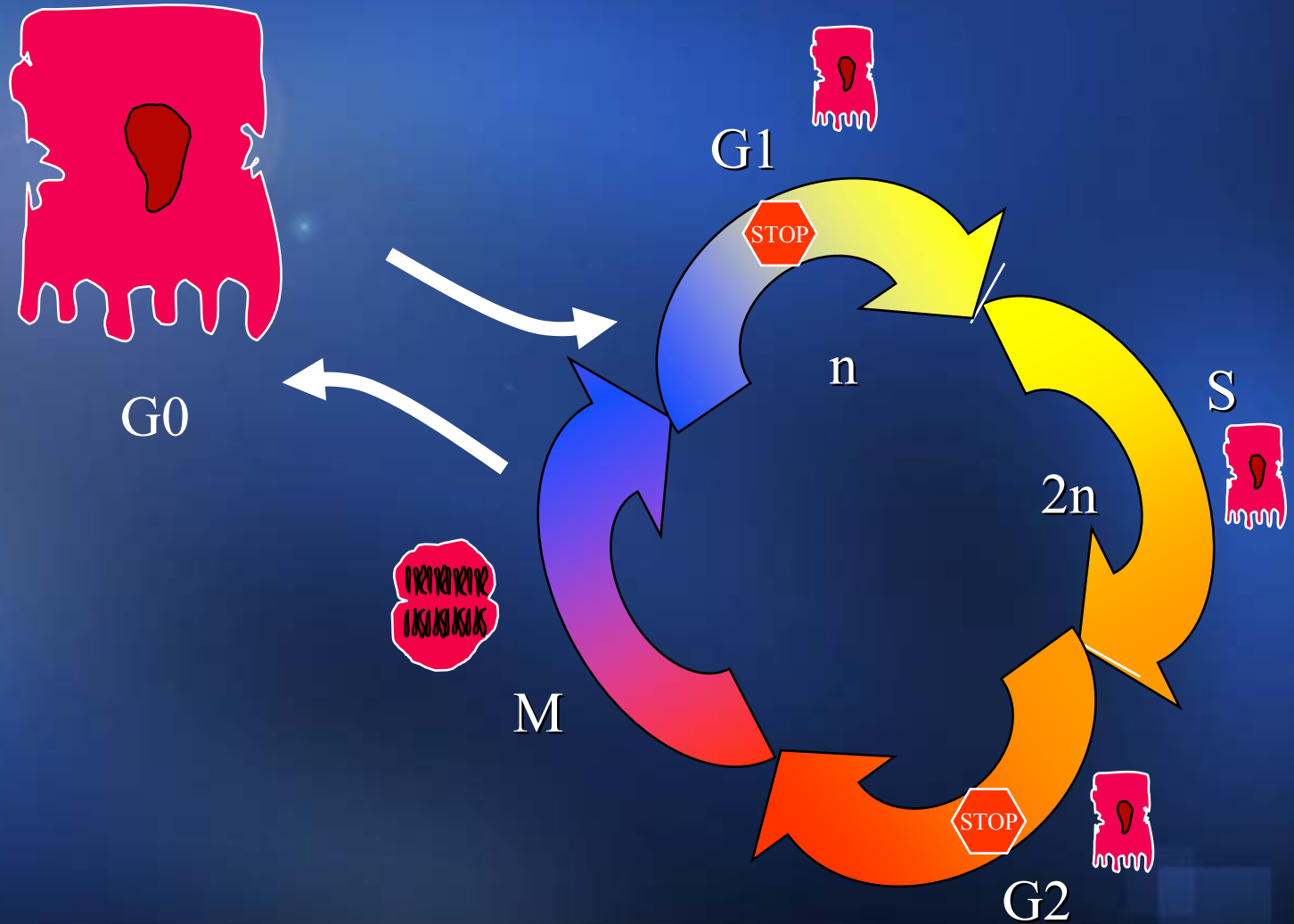
# Acteurs cellulaires de la régénération



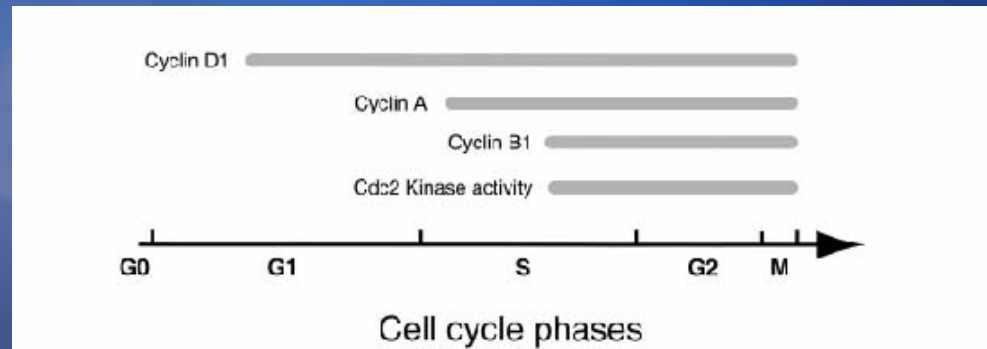
# Origines cellulaires de la régénération hépatocytaire



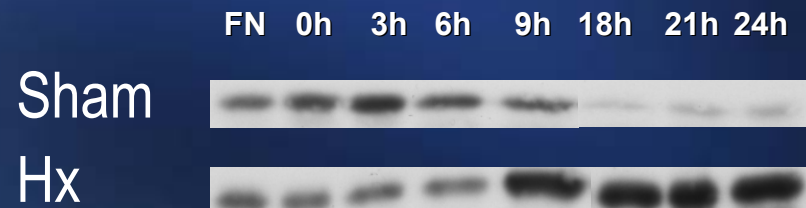
# L'entrée en mitose des hépatocytes:



# Précoce



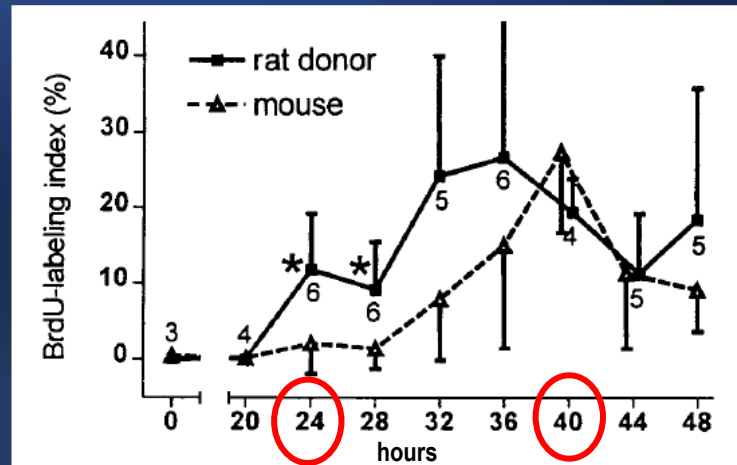
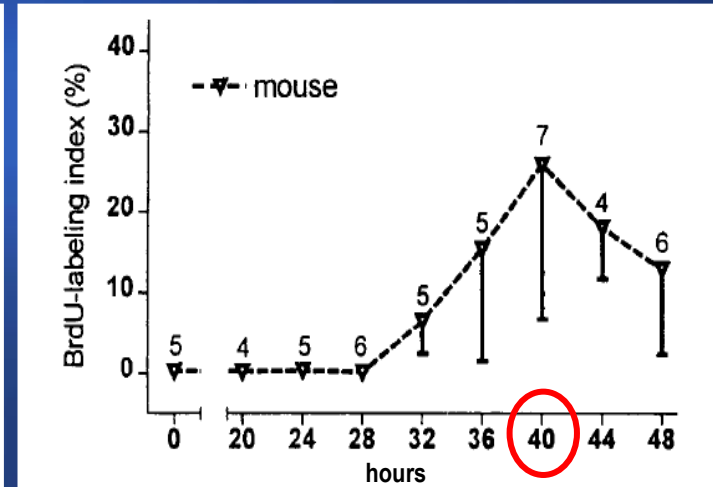
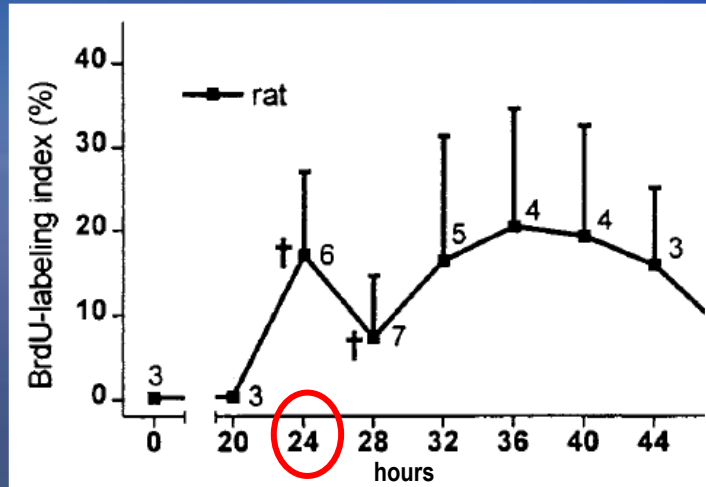
## Cycline D1



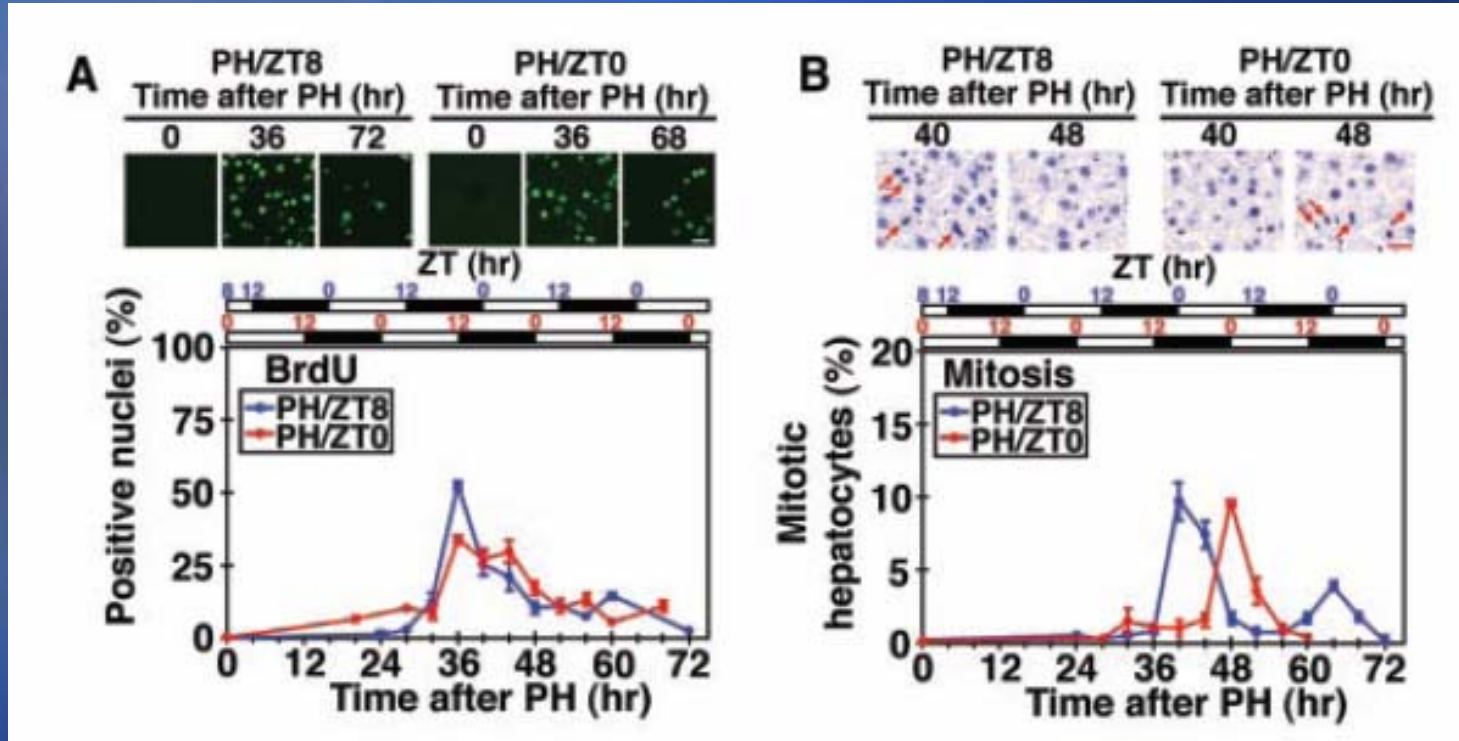
# Massive et coordonnée



# Spécifique de l'espèce



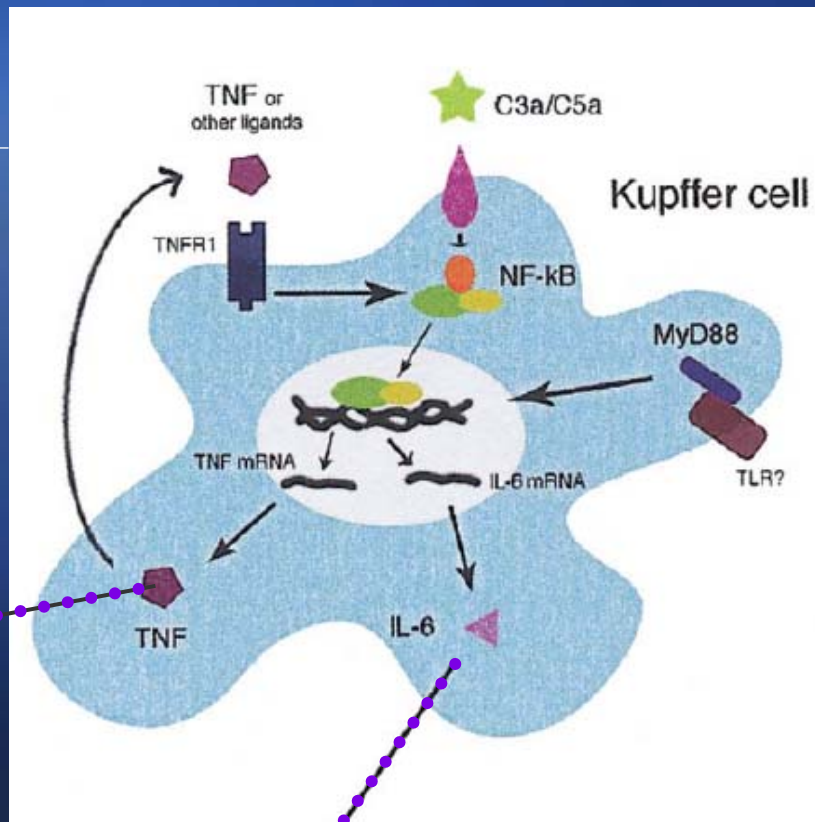
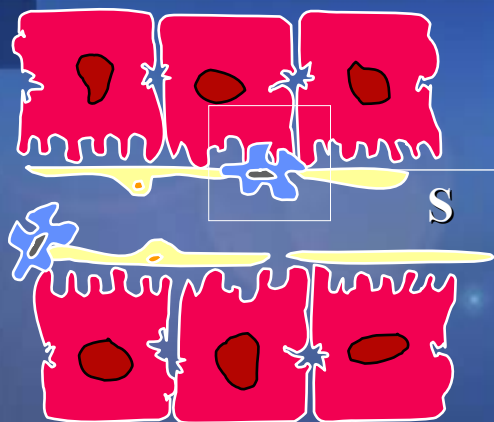
# Circadienne



# Inépuisable



# Sous le contrôle des cytokines

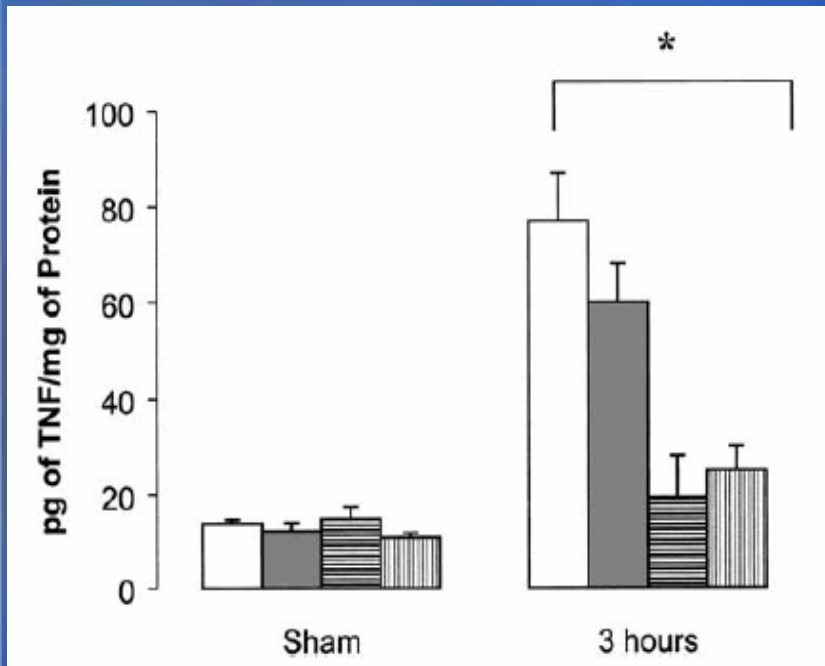


TNF $\alpha$

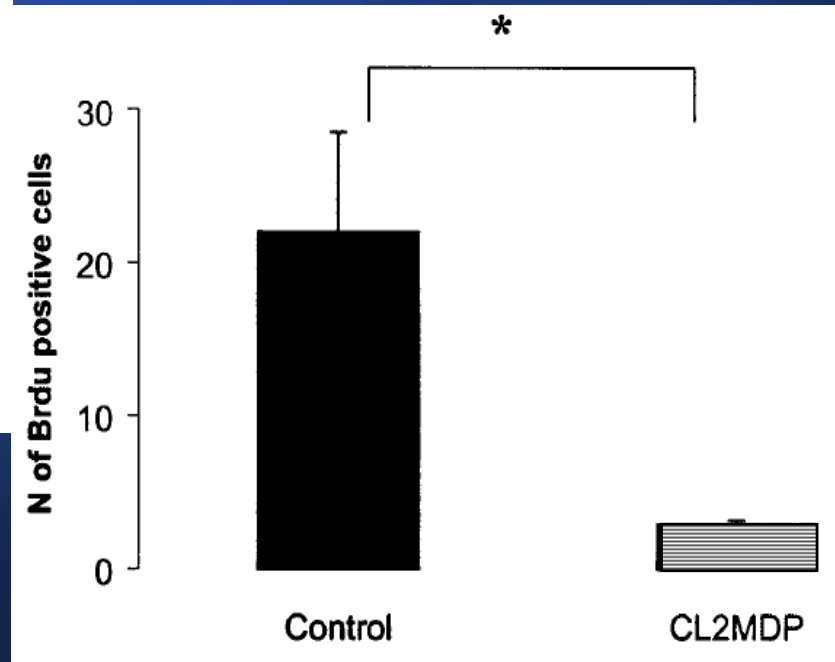
IL6

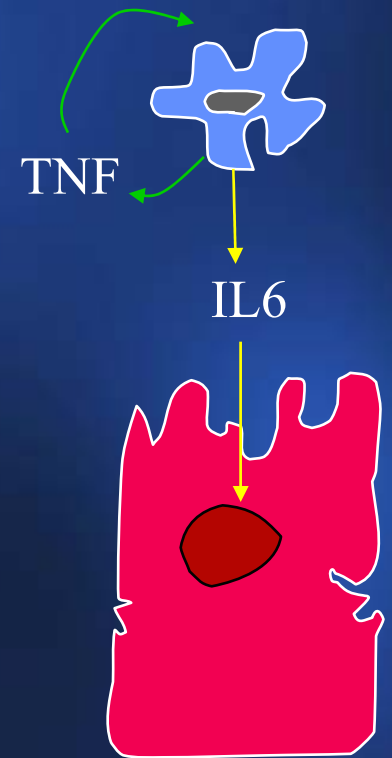
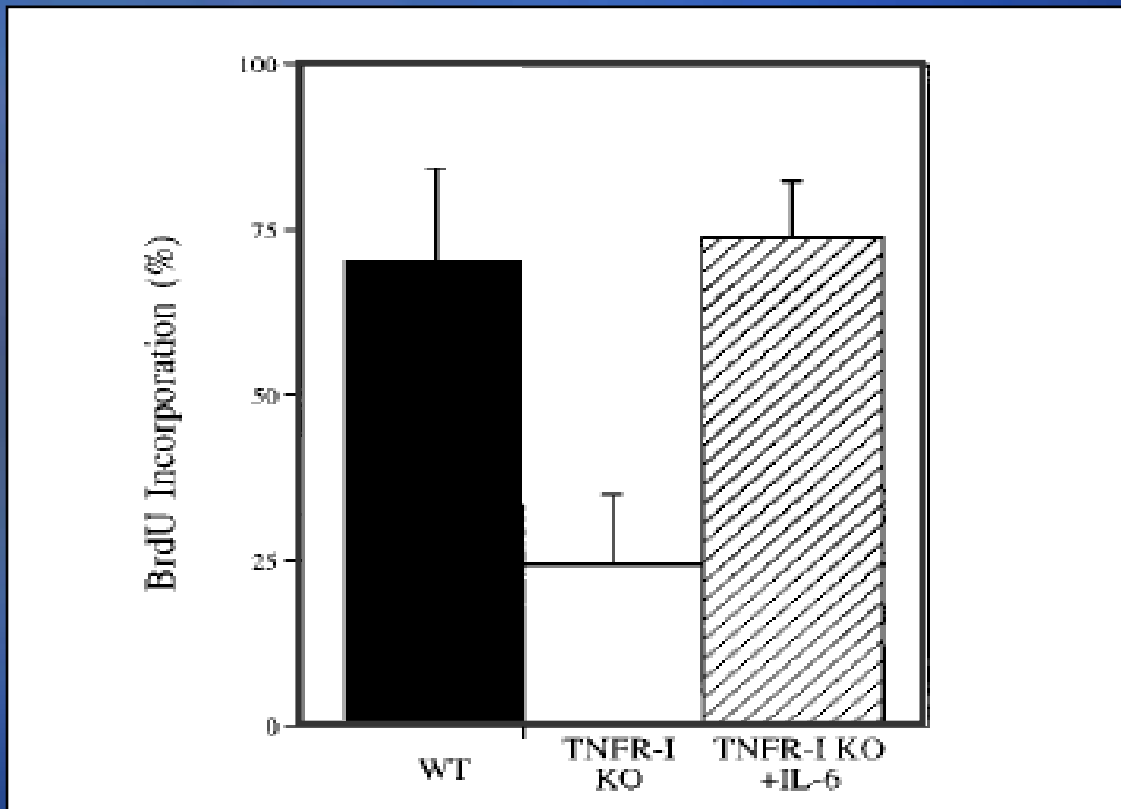


# TNF Alpha

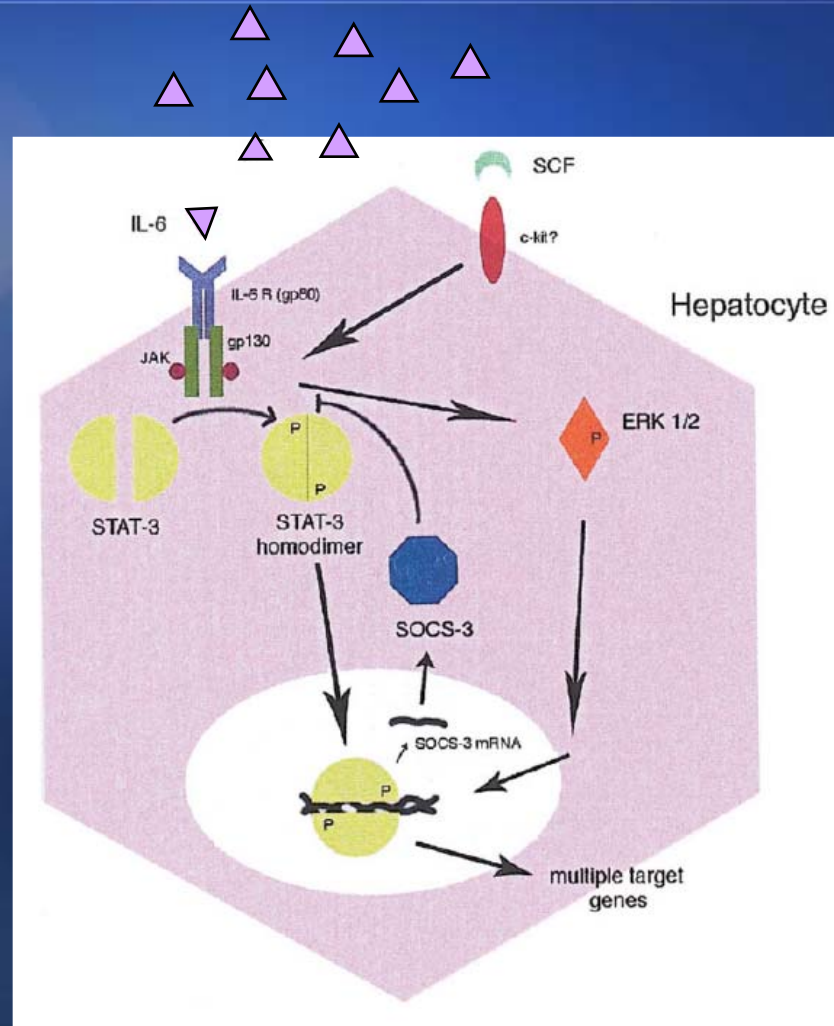


GdCl3
  CL2MDP
  Pentoxifylline

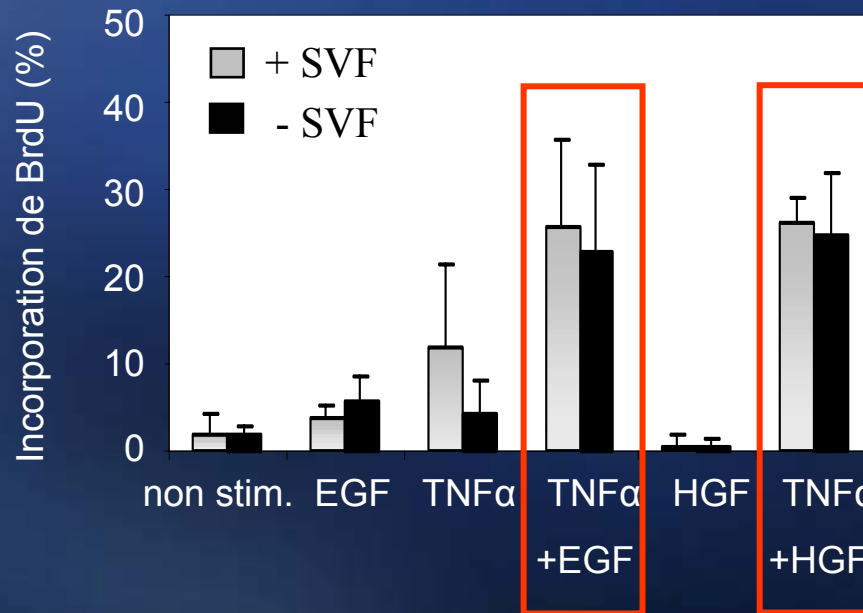
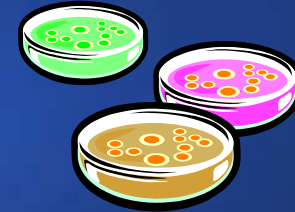
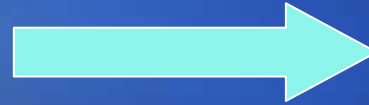


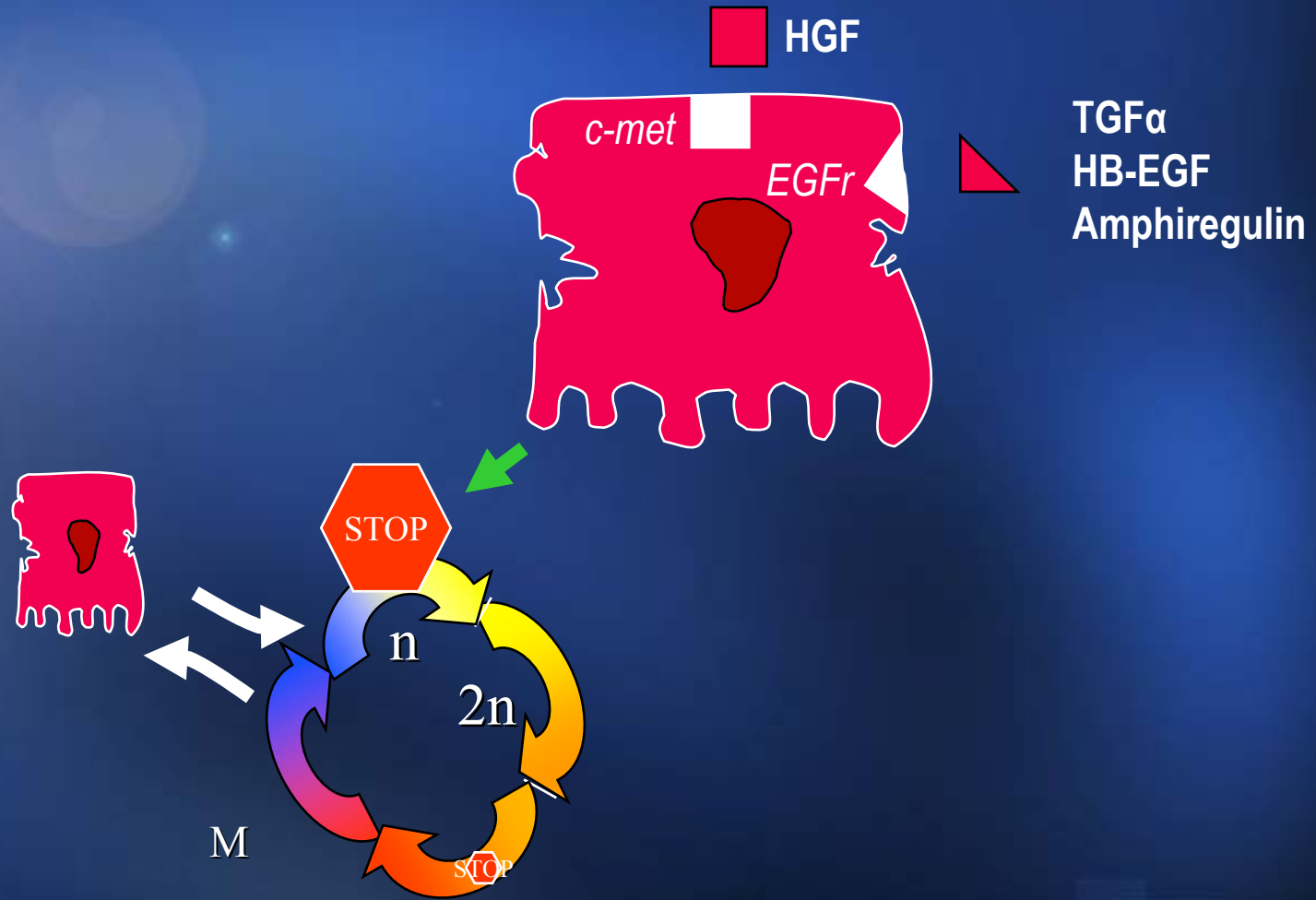


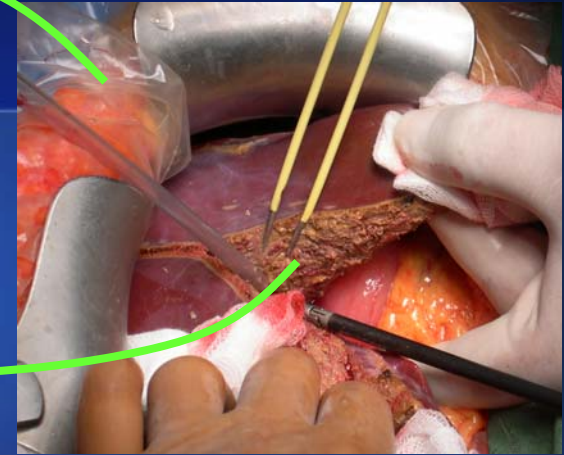
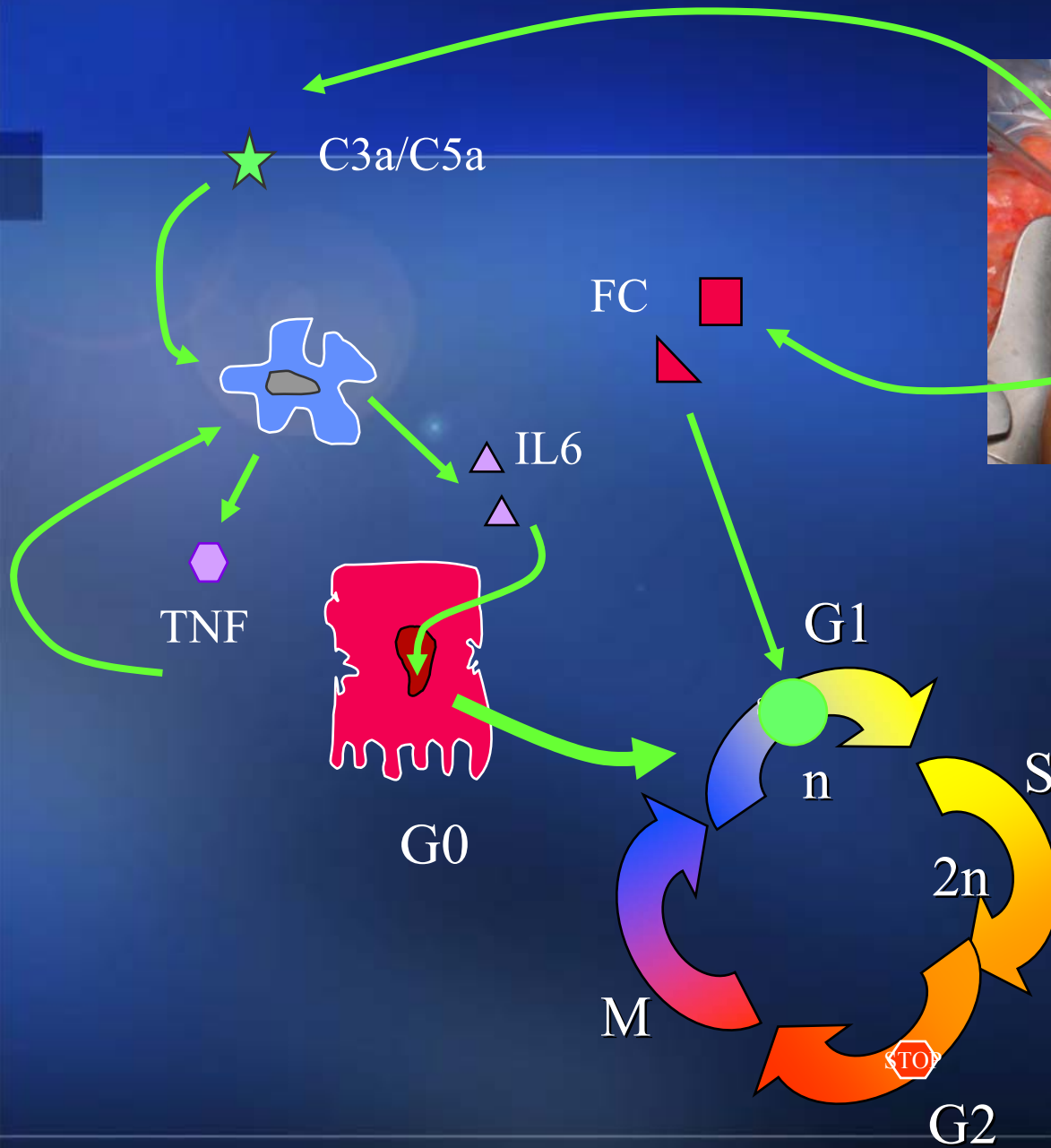
# IL6



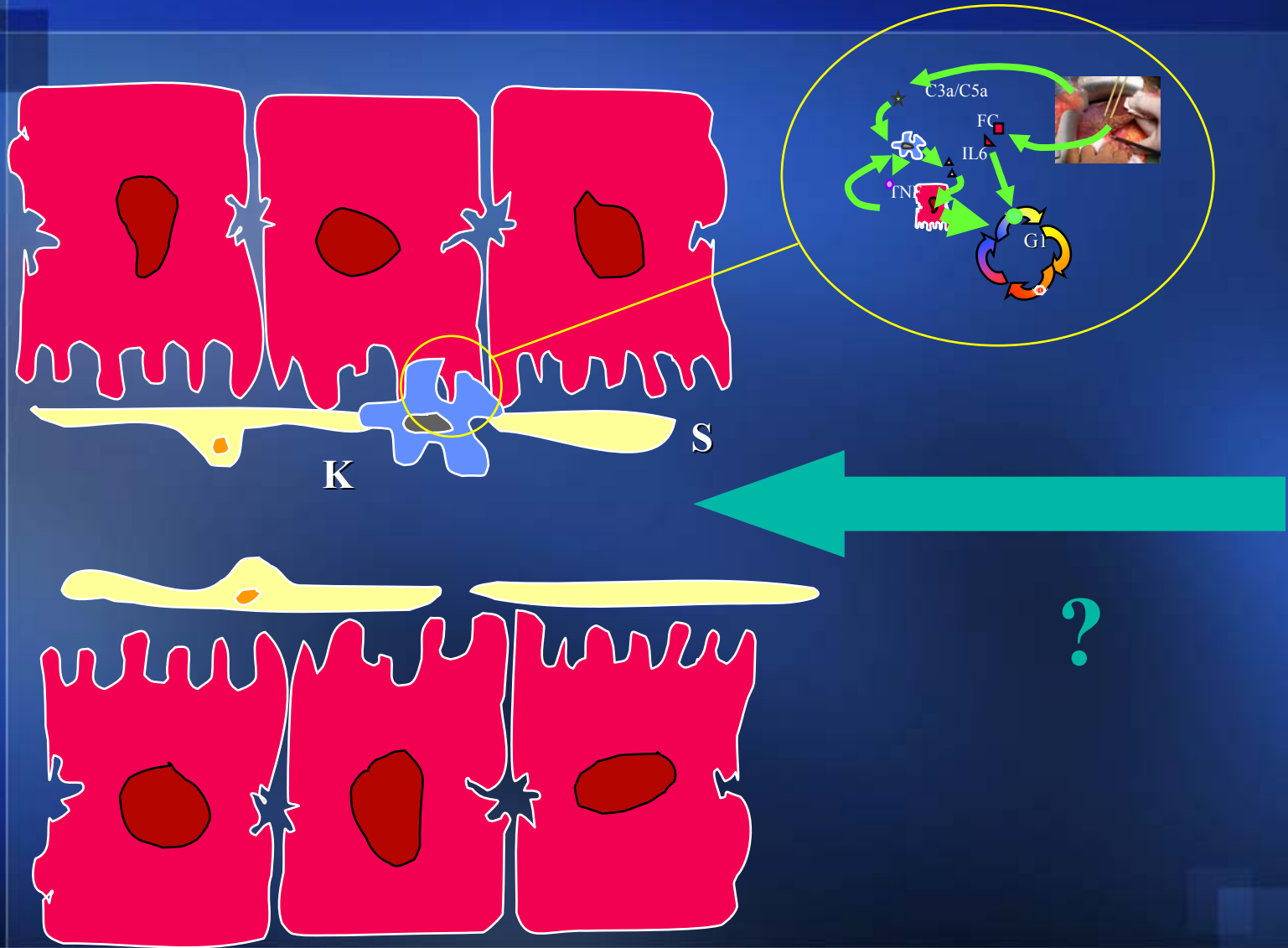
# Maintenue par des facteurs de croissance



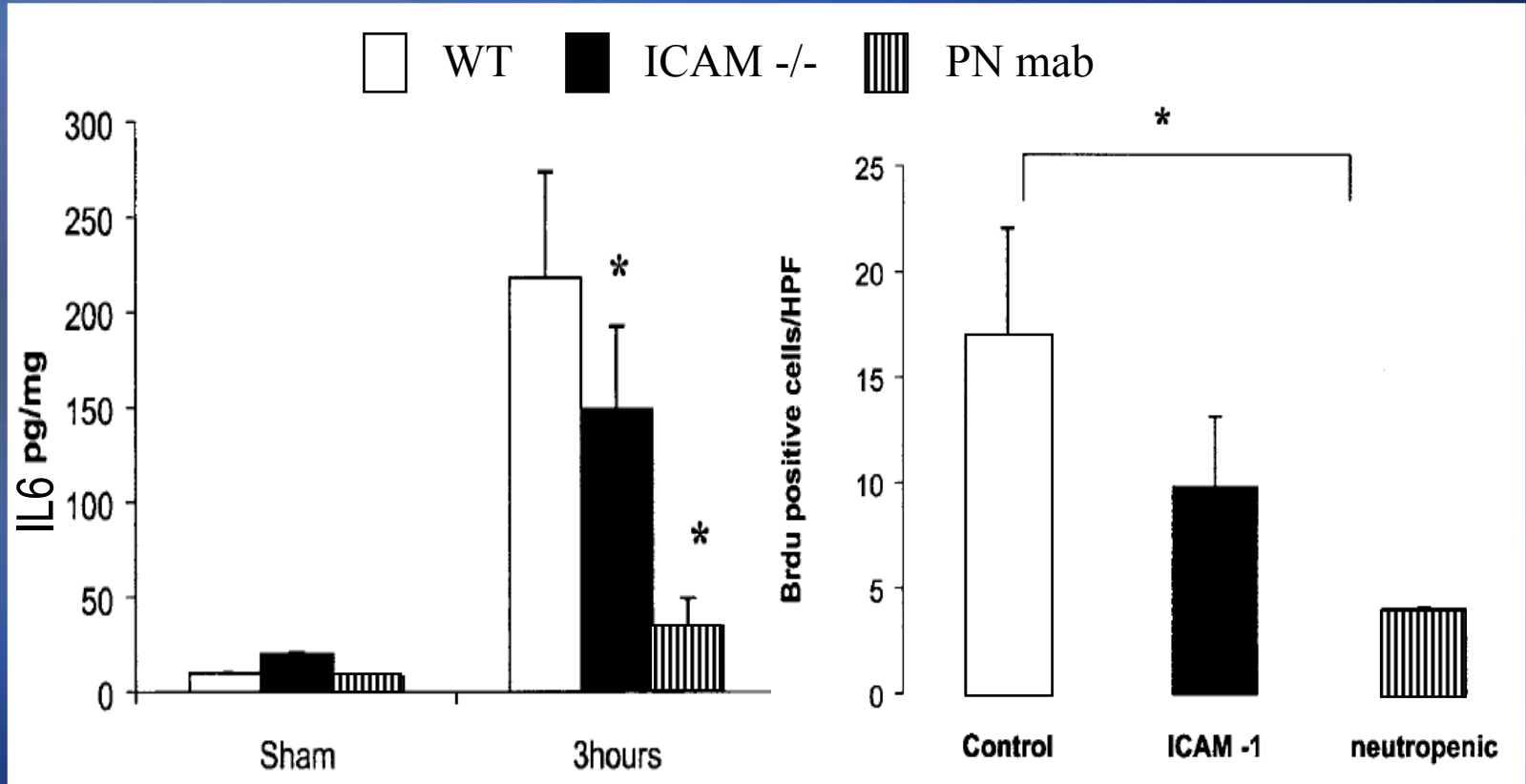


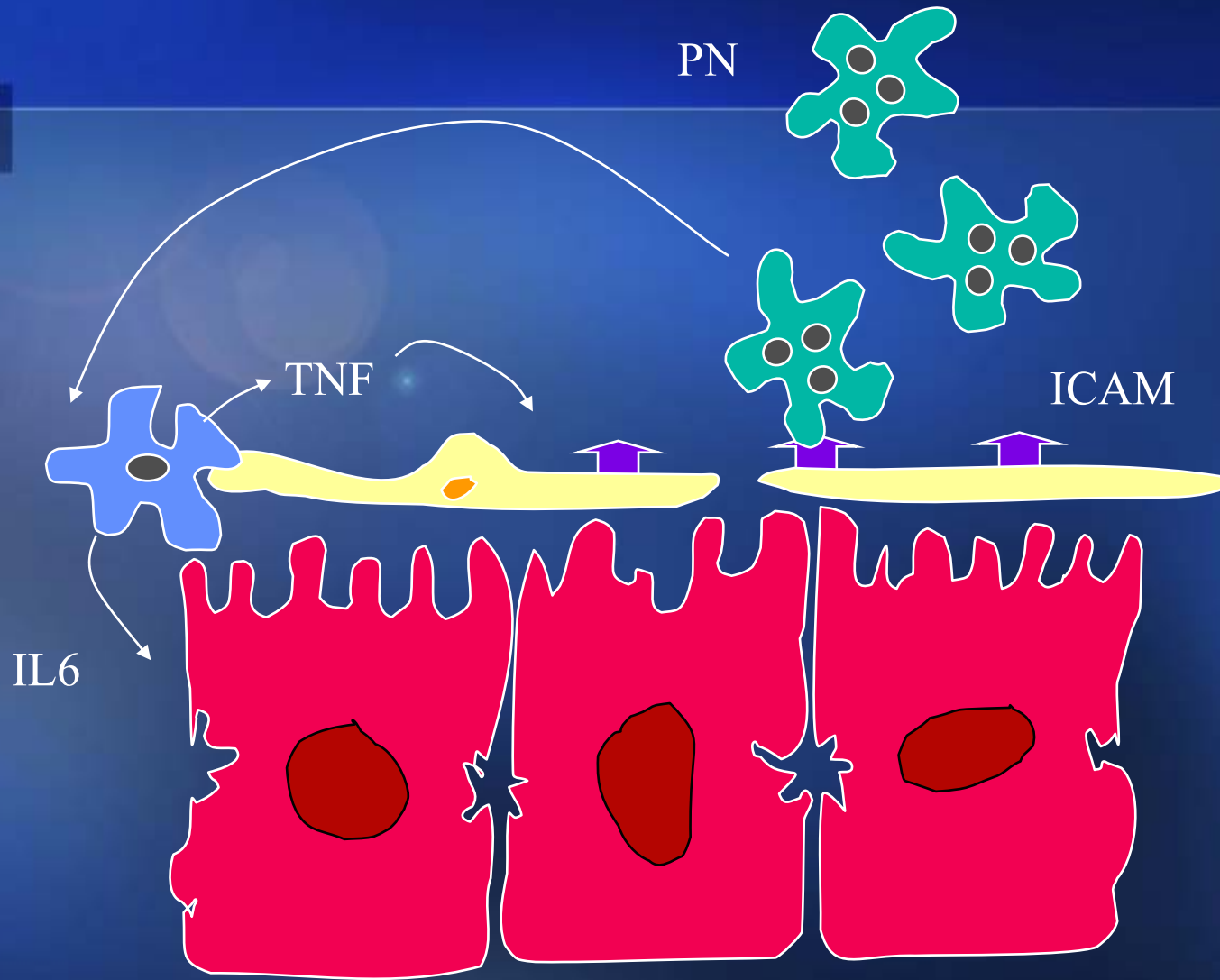


# D'où vient la première information ?

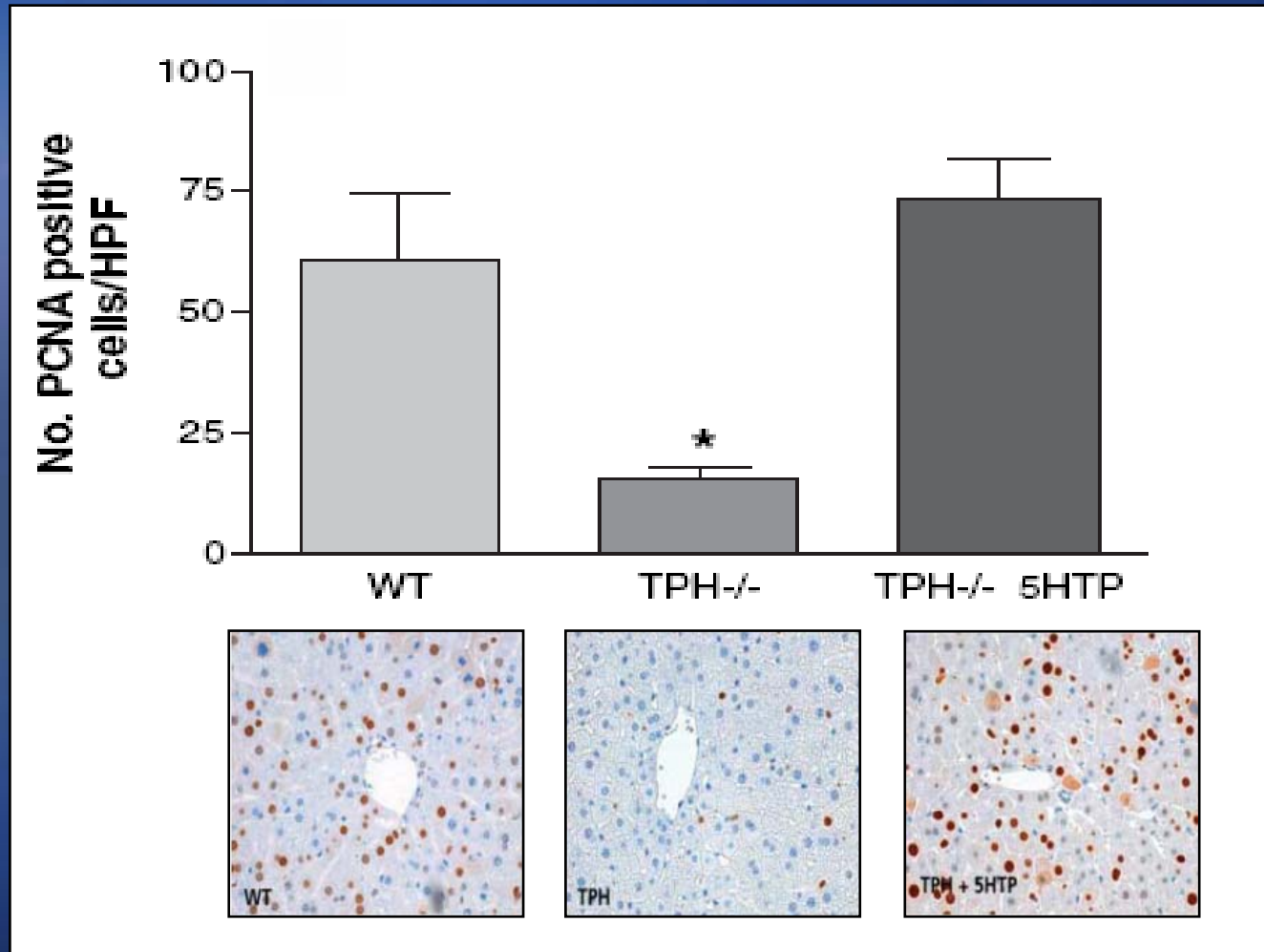


# Réaction inflammatoire et Polynucléaires neutrophiles





# Plaquettes



# Rôle du système splanchnique

## SURGERY

DECEMBER 1975

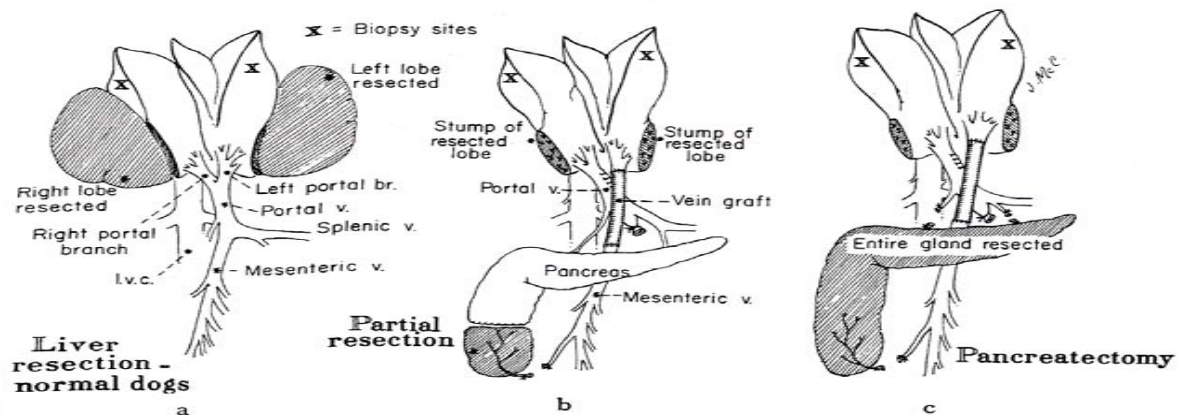
### *Gynecology & Obstetrics*

VOLUME 141

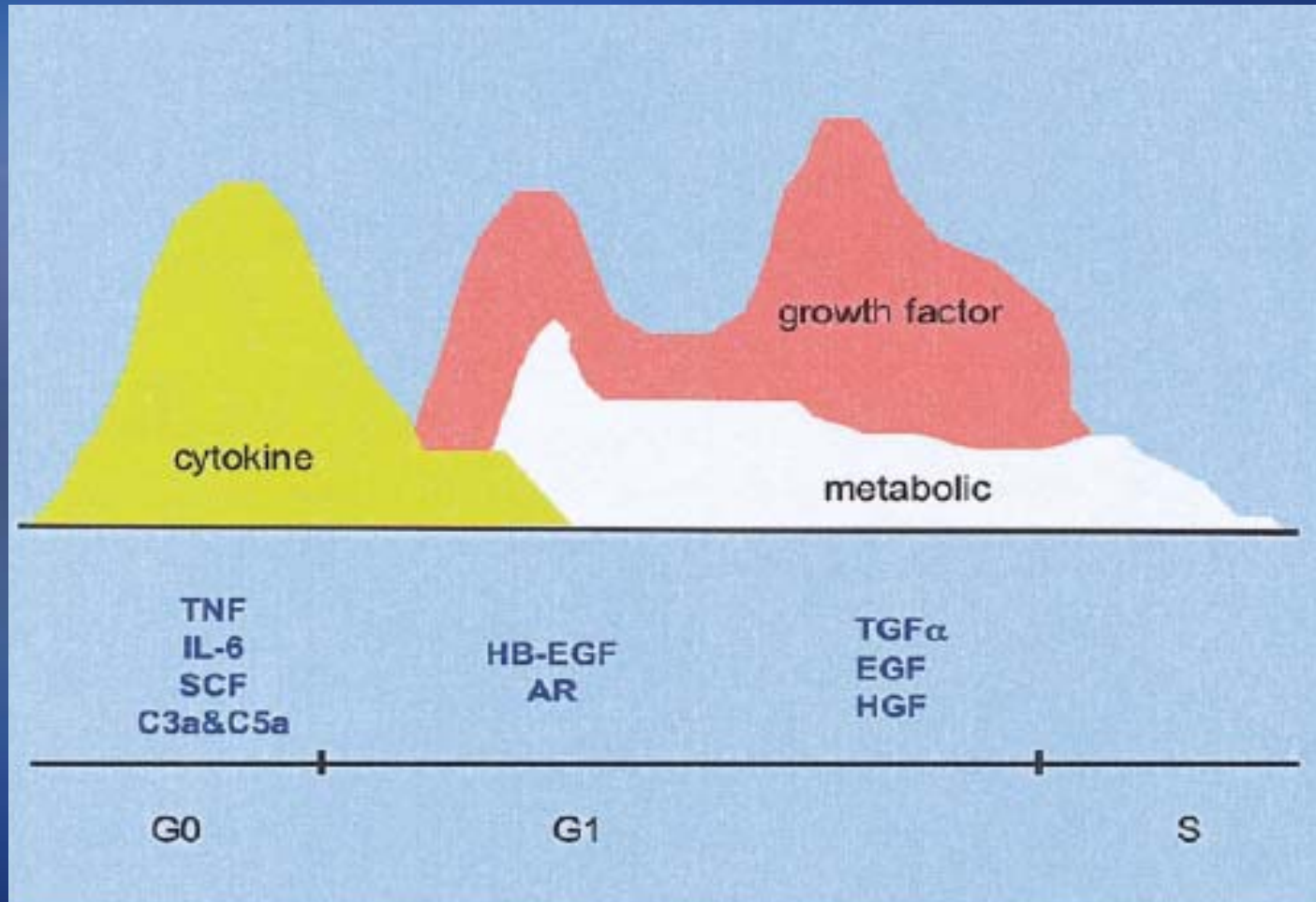
NUMBER 6

#### PORTAL HEPATOTROPHIC FACTORS, DIABETES MELLITUS AND ACUTE LIVER ATROPHY, HYPERTROPHY AND REGENERATION

T. E. Starzl, M.D., F.A.C.S., *Denver, Colorado*, K. A. Porter, M.D., *London, England*, N. Kashiwagi, M.D., and C. W. Putnam, M.D., *Denver, Colorado*



# Organisation générale



# Comment s'arrête la régénération ?



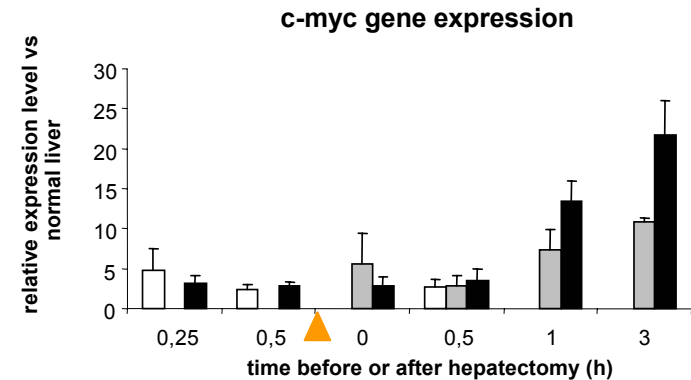
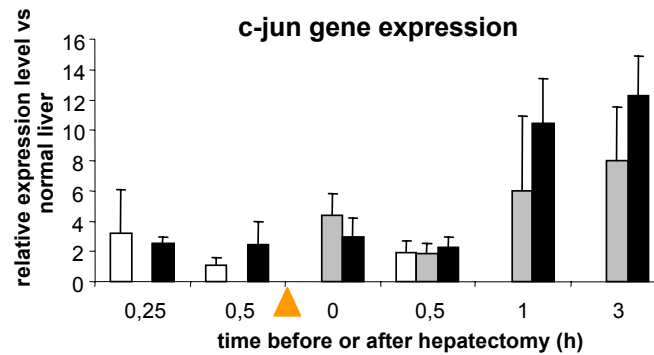
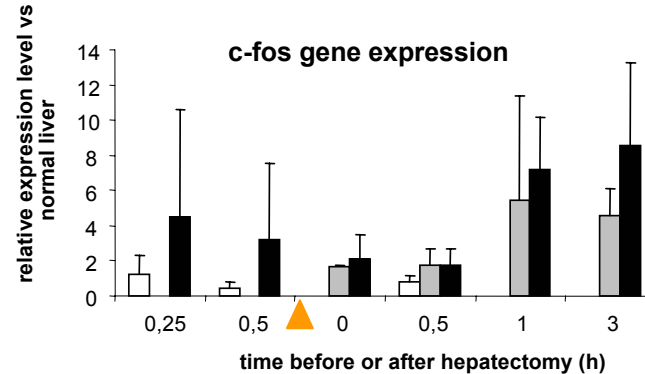
Fonction  
Volume  
Cytokines  
Facteurs de croissance  
...

# Accélérer la régénération

## Une solution à bien des problèmes

- IL6 recombinant ?
  - Efficace expérimentalement
  
- Acides aminés régénérateurs
  - Possible
  - Essai clinique en cours
  
- Stress
  - Ischémie-reperfusion ?

# Ischémie-reperfusion pas si délétère

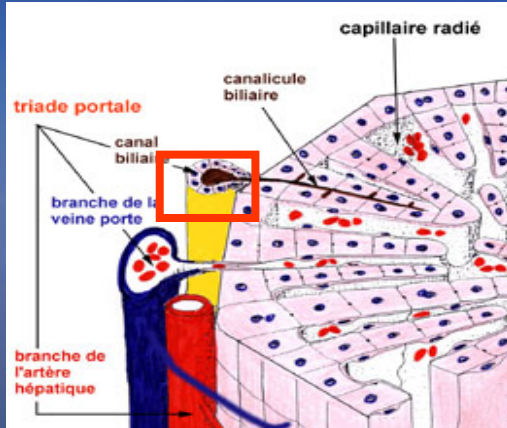


□ EXT+SHAM  
 ◻ EXT+ PH  
 ■ IC+PH



E. Russell '06

# Canal de Herring :



Cholangiocytes

Cellules ovaies

Hépatocytes

